

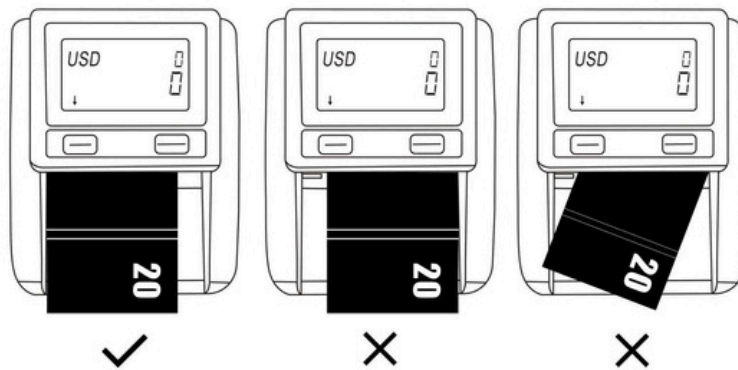
# QUICK INSTALLATION GUIDE

## 168D COUNTERFEIT DETECTOR

- 01 Battery status indicator (when battery is inserted)
- 02 Total number of scanned banknotes in add mode
- 03 ADD function indicator
- 04 Total value of scanned banknotes in add mode / Denomination of last scanned banknote
- 05 Banknote exit direction indicator
- 06 Short press: showing details of counting result  
Long press: clear count
- 07 Long press: banknote exit direction selection

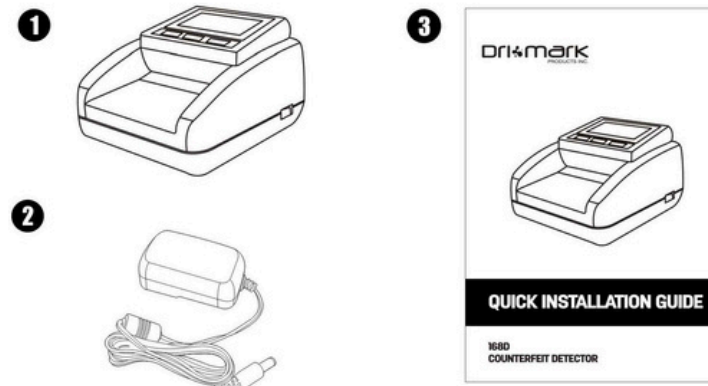
### 4. OPERATING INSTRUCTIONS

#### 4.1 INSERT BANKNOTES



Insert US dollar in all direction to the left side.

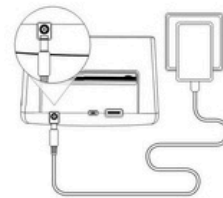
### 1. PACKAGE CONTENT



1. Counterfeit Detector 168D
2. Power Adapter
3. Quick Installation Guide

### 2. SETUP

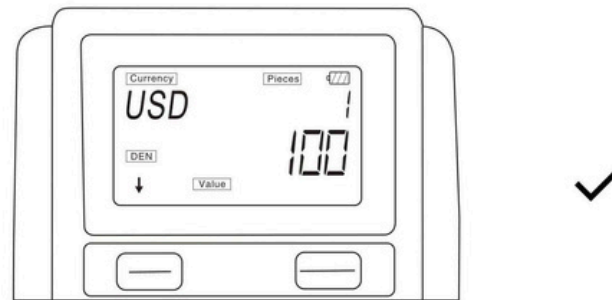
#### 2.1. POWER ON / STANDBY MODE



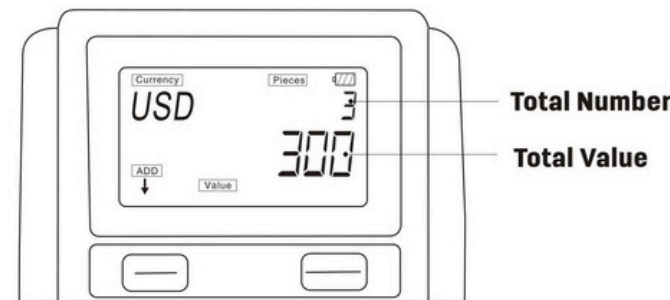
Connect the power adapter to the device and plug the power adapter into the main outlet. Then turn on the power switch.

**NOTE:** When not in use, the display will go into standby mode after 120 seconds. Press right button to active. When a note is inserted, the detector will be activated automatically.

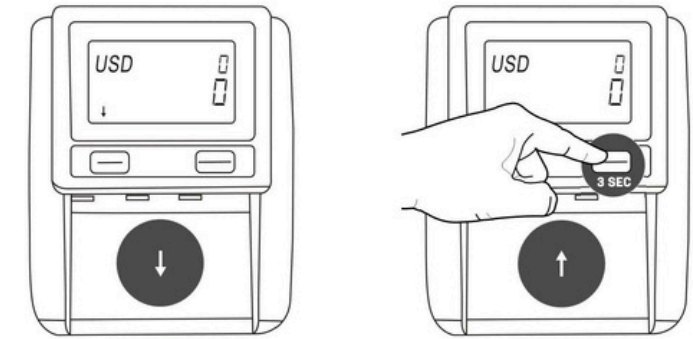
#### 2.2 ADD MODE (DEFAULT)



When the machine detects a genuine banknote, the denomination of scanned banknote will be shown in 2 seconds. Then total number and total value will be shown.



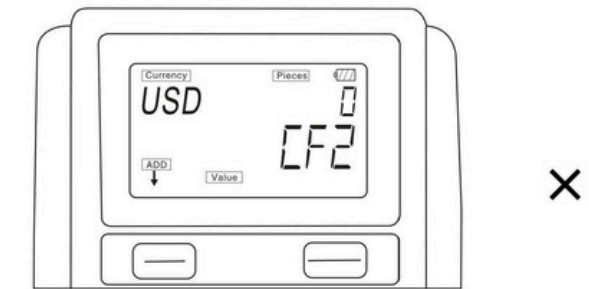
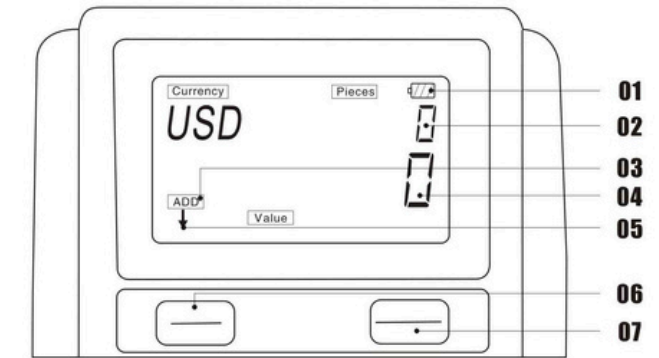
### 2.2. BANKNOTE EXIT DIRECTION



Default : banknote exit at front

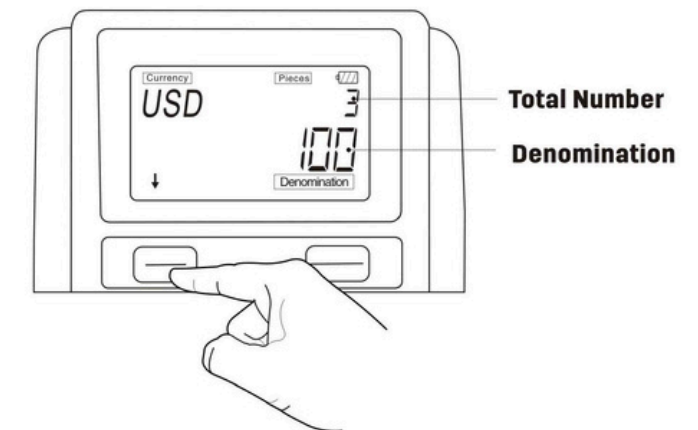
Banknote exit at rear

### 3. DISPLAY AND CONTROLS



When a suspected banknote is detected, an error code will be displayed. For error message, please refer to chapter 5.

#### 4.3 CHECK COUNTING RESULTS



Short press left button to check total number of each denomination counted. Long press left button to clear the counting results.

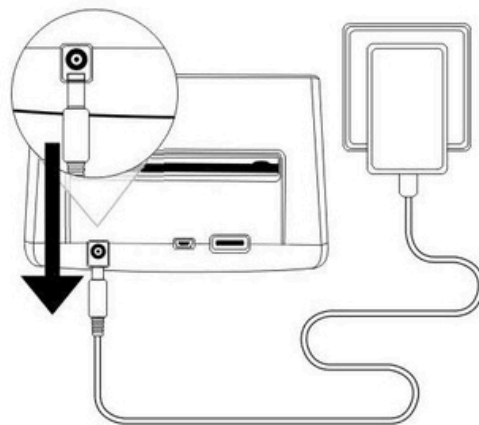
# 5.ERROR CODES

Error code will be displayed when a suspected banknote is detected.

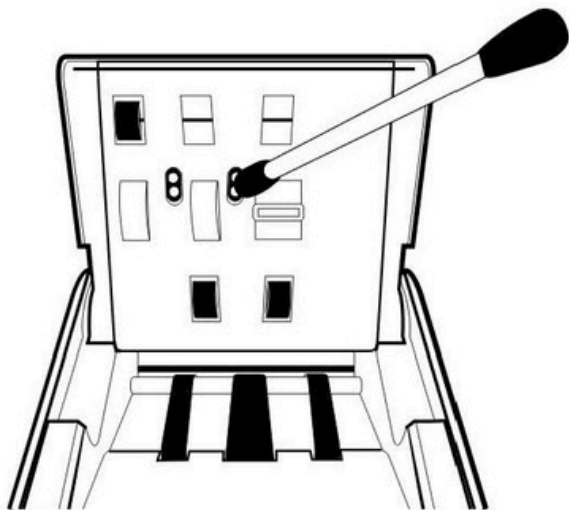
- Cf0 Banknote inclined error**
- Cf1 Double note error**
- Cf2 Length error (Size detection)**
- Cf3 Image, color detection error**
- Cf4 Infrared properties error**
- Cf5 Magnetic ink properties error**
- Cf6 UV error**
- Cf7-9 Infrared Error**

# 6.CLEANING INSTRUCTION

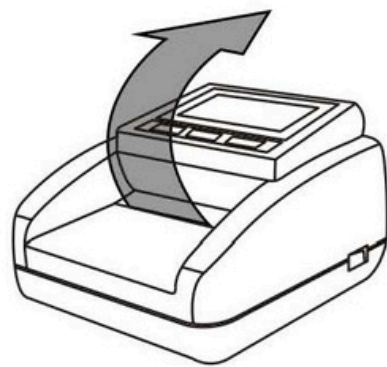
**1 Power off**



**2 Unplug**

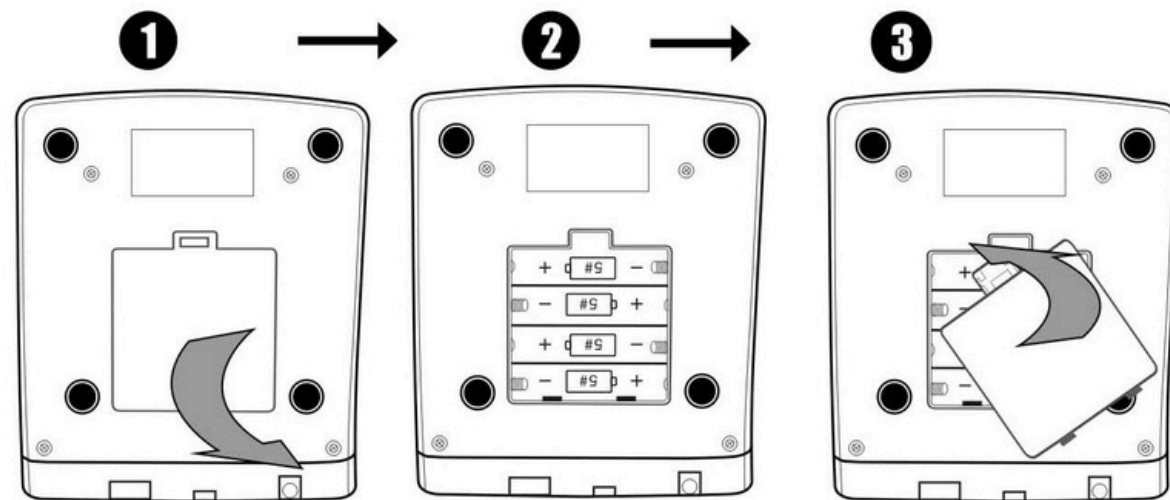


**4 Clean**



**3 Open**

# 7.BATTERY



Our money detector is available for 4 piece of "AA" battery.